

# WSA-1660-9

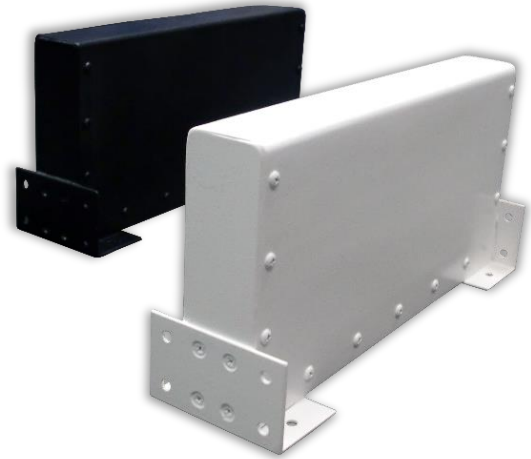
## 1.6-6 (9") L-C Sector Antenna

### DESCRIPTION

The WSA-1660-9 is a broadband antenna that is optimized for frequencies from 1.6 to 6.0 GHz.

This flight qualified antenna provides high gain and sector coverage.

Applications include signal intelligence (SIGINT) and multi-band communication applications.



1.6-6 (9") L-C Sector Antenna

### SPECIFICATIONS

#### ELECTRICAL

Frequency Band	1.6 GHz to 6.0 GHz
VSWR	< 2.0 : 1
Polarization	Linear
Gain	+5 dBi to +15 dBi
Power	50+ Watts CW
Ground Plane	Ground Plane Independent
Connector	SMA Female

#### ENVIRONMENTAL

Shock	MILSTD 810F, 20G
Vibration	RTCA/DO-160
Operational Temp.	-31°F to +185°F (-35°C to +85°C)

#### MECHANICAL

Weight	16 oz (0.45 kg)
Dimensions	8.92" L x 2.5" W x 4.45" H (22.66 cm L x 6.35 cm W x 11.3 cm H)
Mounting	90° Angle Mounts
Finish	F63W12 White Polyurethane Enamel

#### MODEL NUMBERS

Black Color	WSA-1660-9-B
Tan 686A Color	WSA-1660-9-T
Green 383 Color	WSA-1660-9-G
Aircraft Gray Color	WSA-1660-9-AG